

## FM-750 & CFX-750

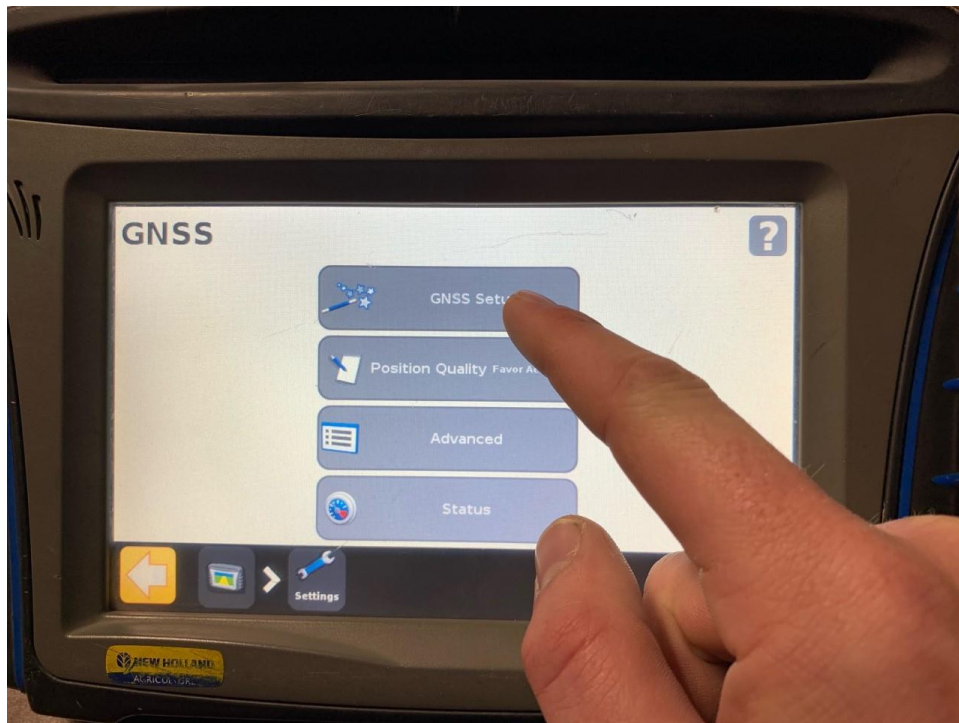
1) Go to WRENCH (settings) icon.



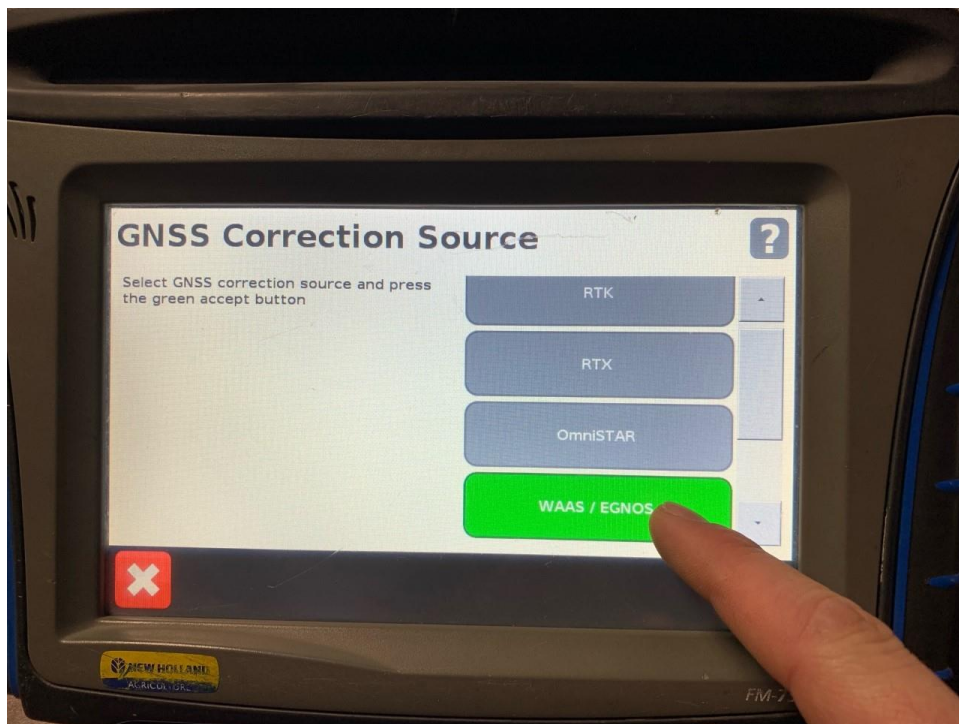
2) Go to GNSS or GPS.



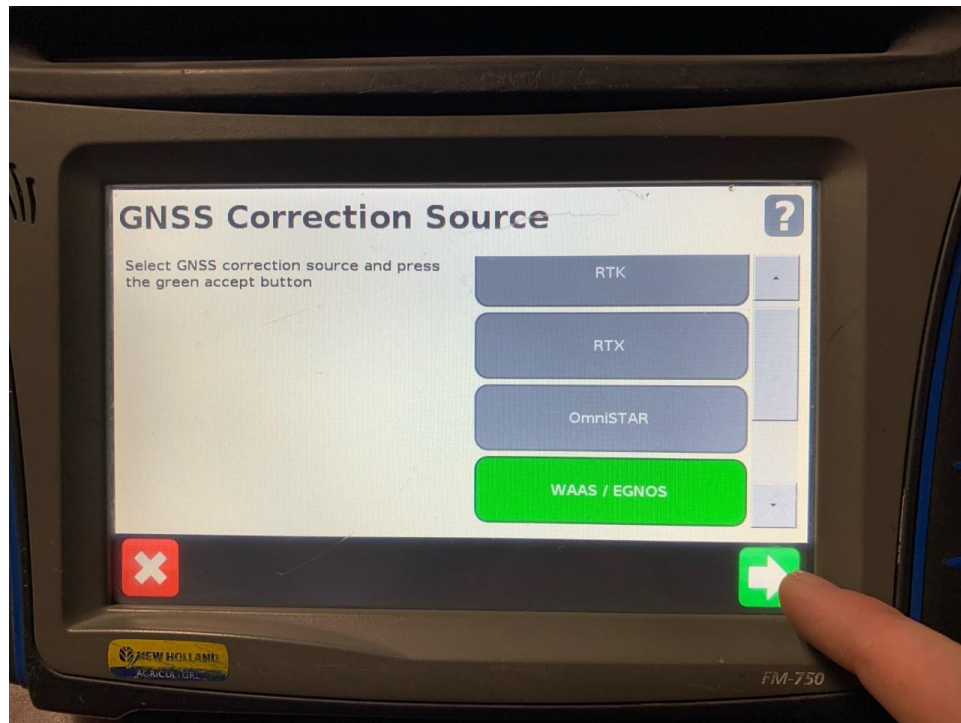
### 3)Go to GPS Setup.



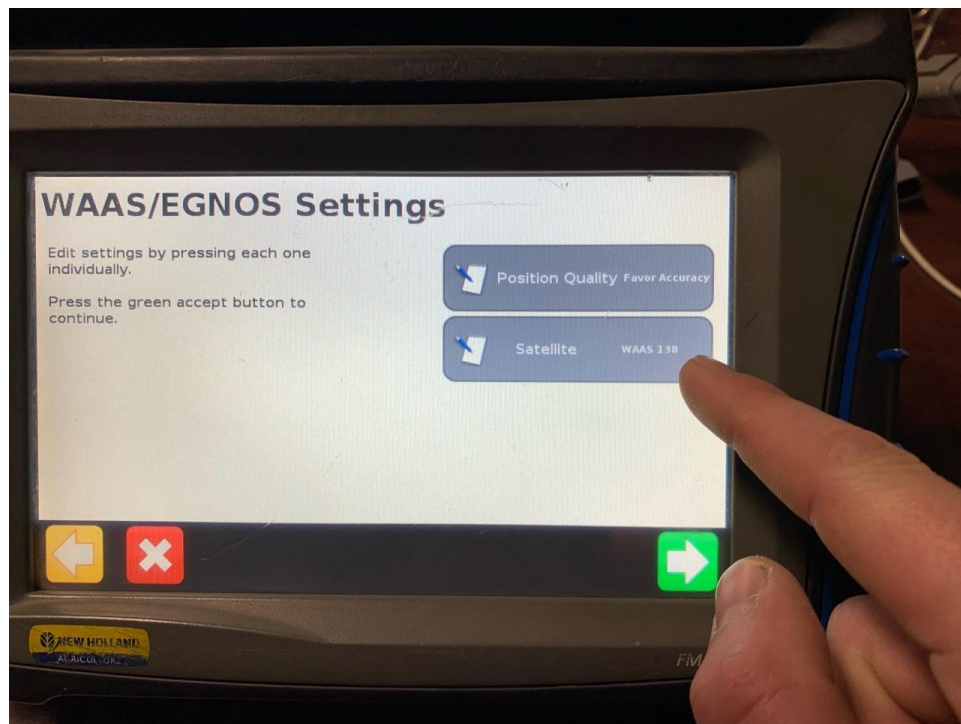
### 4)Select WAAS / EGNOS.



## 5) Press the Green Arrow.

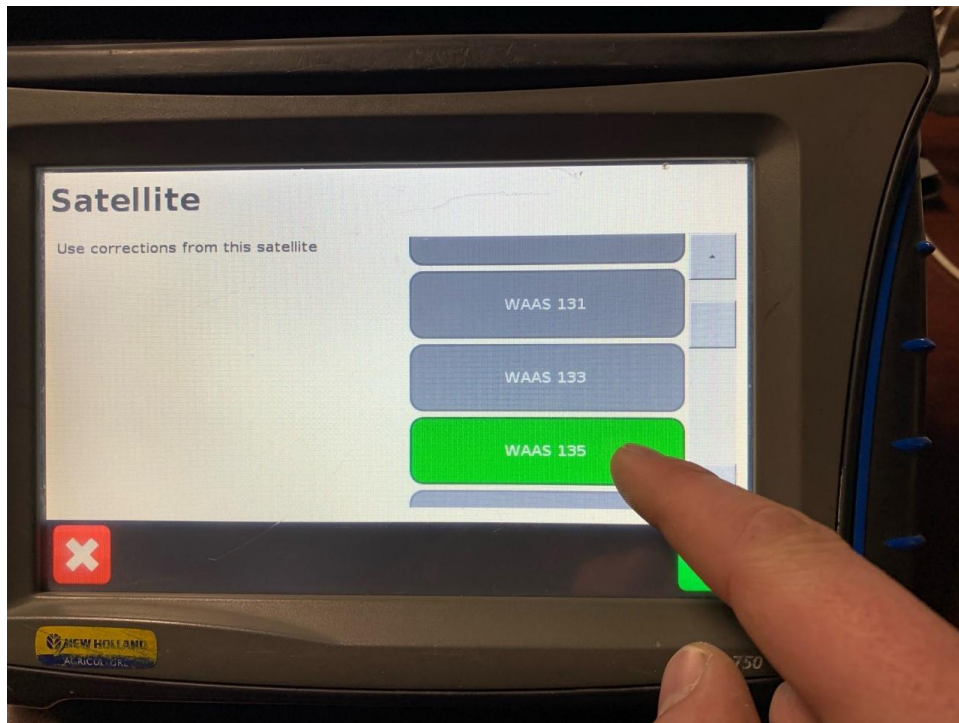


## 6) Select SATELLITE.





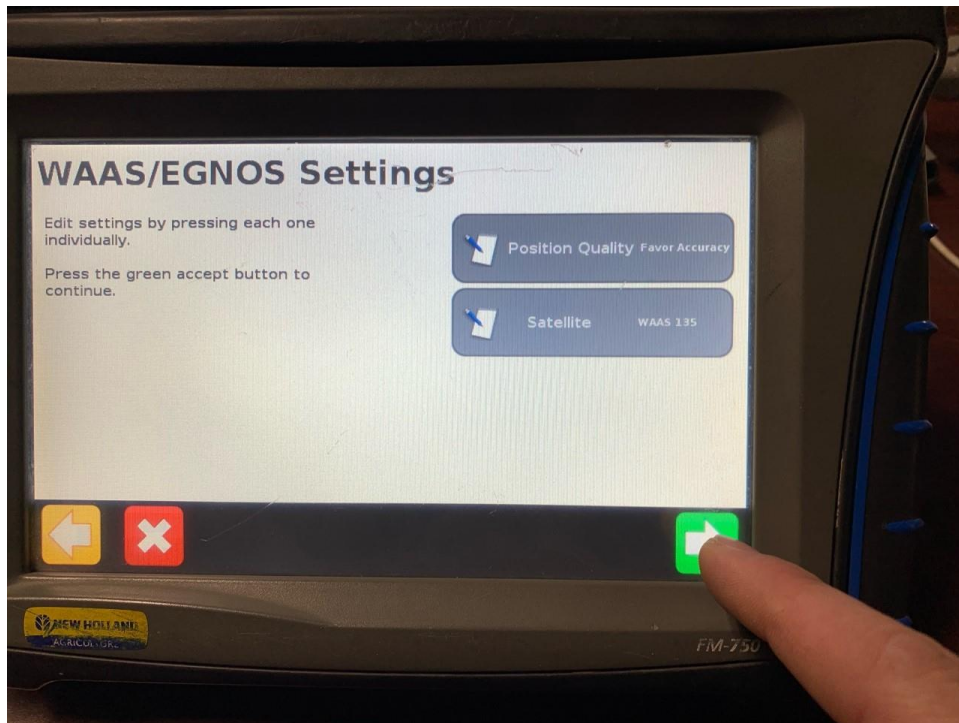
**7)Select WAAS 135.**



**8)Press the Green Checkmark.**



**9) Press the Green Arrow.**



**10) You may need to save your configuration when you are finished. If you have multiple configurations saved in the display, you will need to load each configuration, make the GPS setting change, and then save/overwrite the old configuration.**

**This can be done by:**

**11)Go to WRENCH (settings) icon.**



**12)Go to System.**

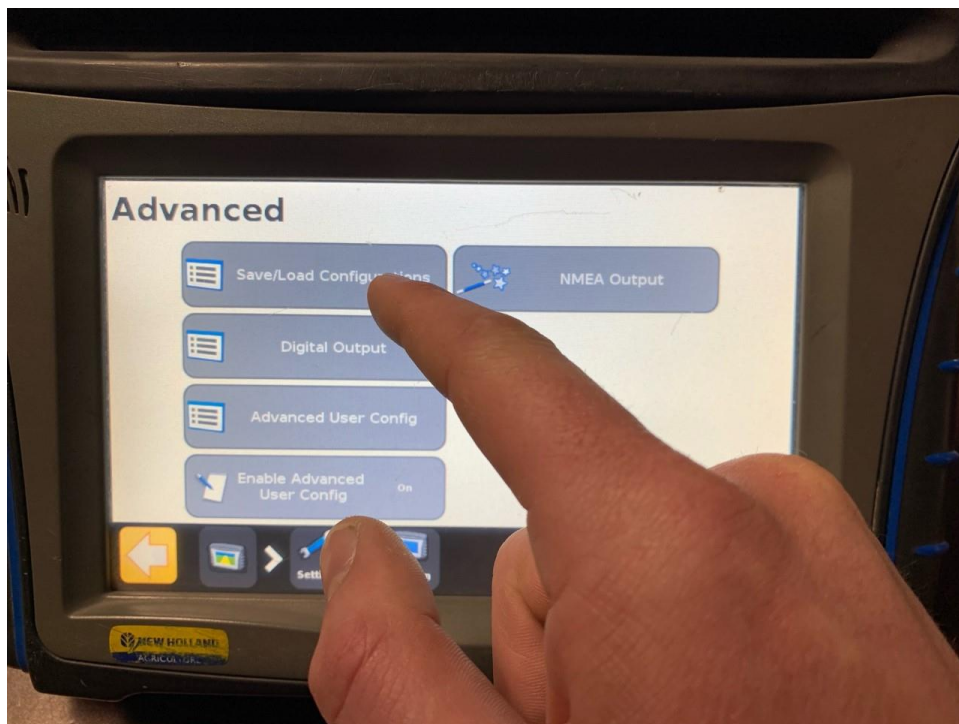




### 13)Go to Advanced.



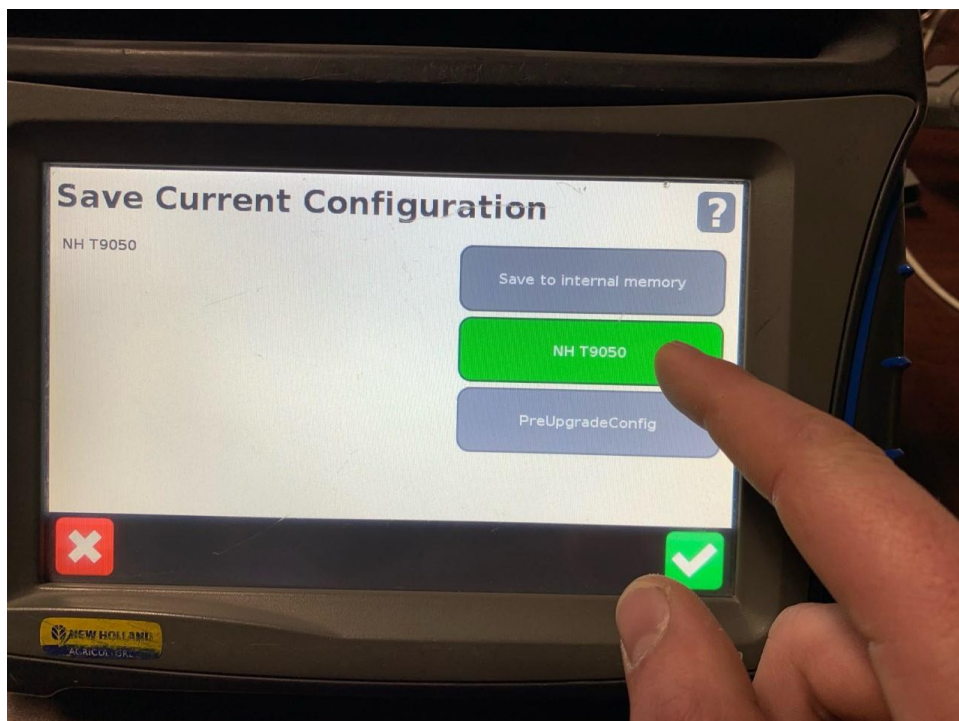
### 14)Select Save/Load Configurations.



## 15) Select Save Current Configuration.

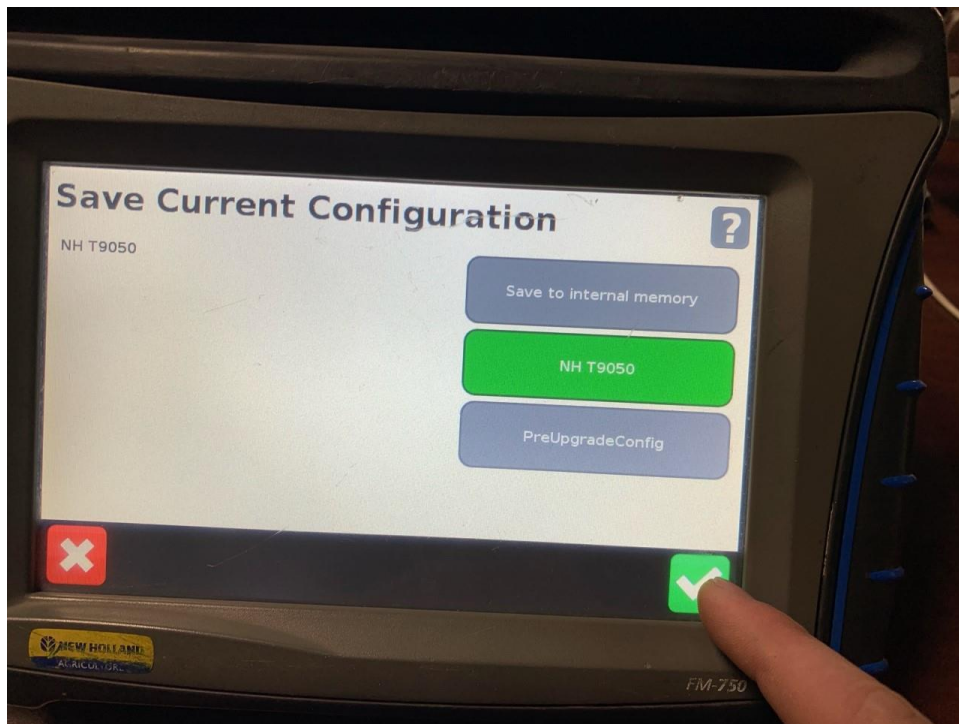


## 16) Select the profile you wish to overwrite.

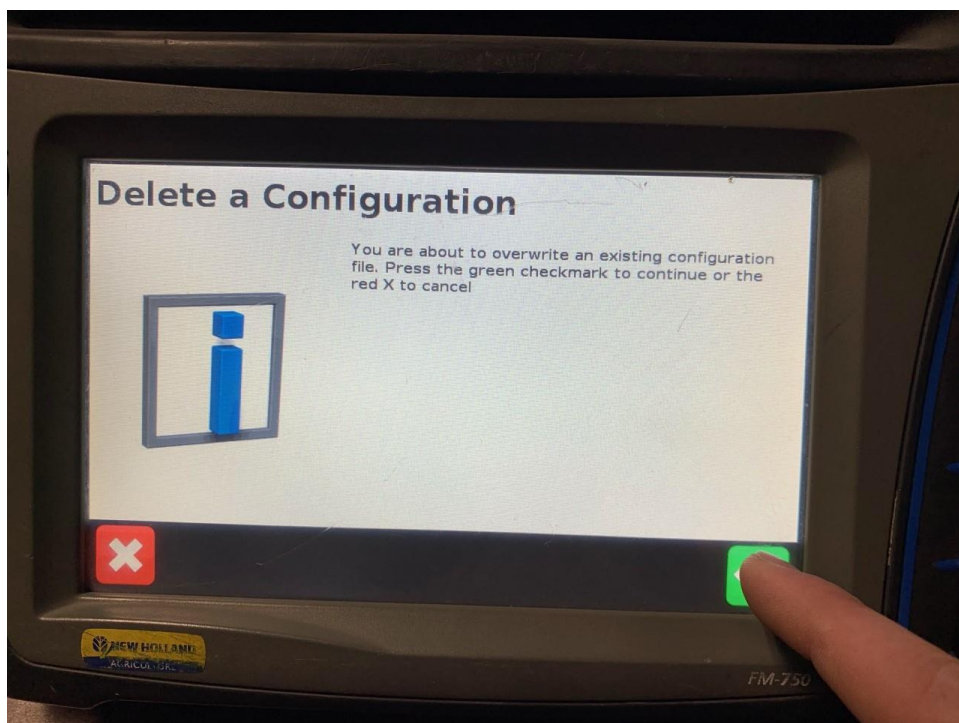




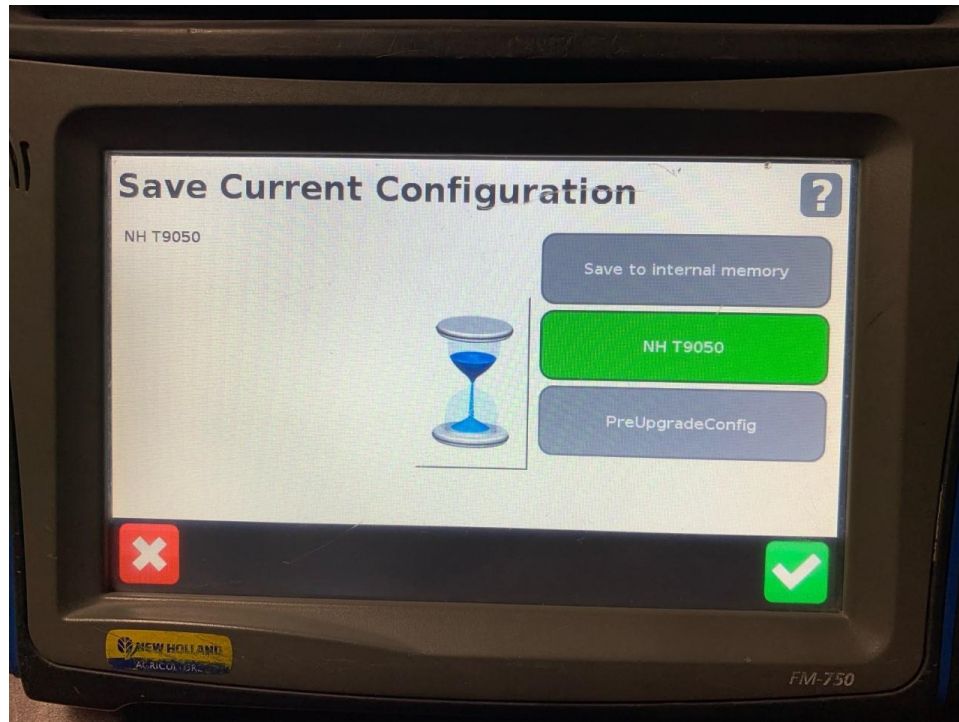
## 17) Press the Green Checkmark.



## 18) Acknowledge the warning with Green Checkmark



**19) Wait for the hourglass to disappear.**



**20) Load any additional profiles and repeat steps 1 thru 20 for each profile. Be careful to overwrite the correct profile when saving.**

**Thank you for supporting Vanee Farm Centre.  
If you require any assistance with these  
changes, please call your Precision Specialist.**

<b>Nolan Pitt</b>	<b>403-852-0064</b>
<b>James Siebert</b>	<b>403-308-4012</b>
<b>John Reimer</b>	<b>403-308-7327</b>